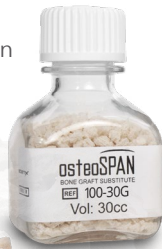


osteoSPAN™

BONE GRAFT SUBSTITUTE

Bridge the Gap

The Biogenix product line is built on osteoSPAN™, a proprietary and proven bone graft extender indicated for use in long bone defects and posterior spinal fusion. Engineered to **Resorb, Remodel** and **Restore**, this calcium phosphate/calcium carbonate composite, provides full interconnected porosity that emulates human cancellous bone. All surfaces throughout the porosity are covered by a thin layer (~ 4 microns) of calcium phosphate, the primary mineral content of bone. This surface controls the resorption rate of the calcium carbonate substrate. Studies have shown that osteoSPAN becomes incorporated into a bone fusion mass, while gradually resorbing over a 6-12 month period - ideal for bone remodeling.*



Configuration: Granules and strips

Chemistry: Calcium phosphate/calcium carbonate

Architecture: Interconnected porosity

Pore Size: 500 microns

Resorption profile: 6-12 months

Special storage or handling: None

osteoSPAN DIFFERENCE

Bone Friendly Chemistry

- Calcium phosphate/calcium carbonate composite mimics human bone
- Composite materials engineered to resorb, remodel and restore in 6-12 months

Bone Friendly Architecture

- Full interconnected macroporosity allows remodeling in, on and throughout
- Pore size ideal environment for bone cell growth

How to use osteoSPAN...

Mix It.

1-1 with Autograft



Granule form shown

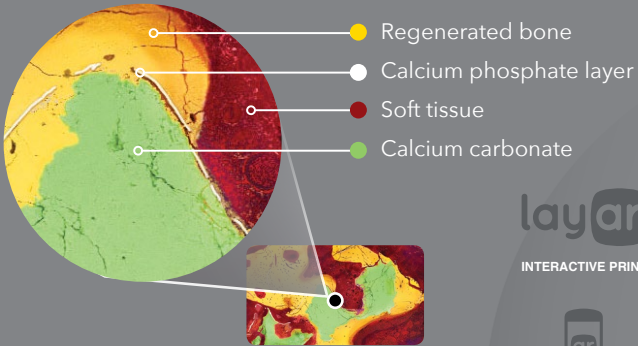
Place It.

Posterior gutters or other bony defects



Block form shown

How it works...



After osteoSPAN is mixed with autograft and implanted next to viable bone, new bone and soft connective tissue begins to grow throughout the interconnected pores. By three months, osteoclasts resorb the outer calcium phosphate layer, exposing the more rapidly resorbable calcium carbonate, while the osteoblasts replace implant material with additional bone.

Catalog Number	Description
100-SLF	Fusion Kit
190-SLF	Fusion Kit Large
100-30G	30cc Granules/1-4mm

layar

INTERACTIVE PRINT



Download the free Layar App



Scan this page



Discover interactive content

1641 McGaw Avenue Irvine, CA, 92614
T 949-253-0994 F 949-266-5800 biogennix.com